



Welcome to the site of:

O!TREE  
FROM  
NATURE

CORK Eyewear

## - O!TREE Cork Eyewear - Proposal

## <Exclusively O'Tree's Technical Prowess>



### 1. Production process

- The cork material is used as a fabric or as a raw material for compressing powder.

To be used as a material for TEMPLE and to have basic durability as an eyewear, a supportable frame is required.

It is composed of TR (polyamide) material which is harmless to human body which is suitable for cork which is environment-friendly material.

- TR material is strong at high temperature and has advantages that are not easily broken due to its lightness and flexibility.

On these base frame, we manually wrap the cork fabric around 360 °. After wrapping the cork fabric, the finish is completed with a water-soluble curing agent. After all manual processes, the coating agent of eco-friendly materials was applied to enhance durability once more. Ordinary glasses are produced by finishing the process of making base frames, but cork eyewear will go through three to four more processes.

## <Exclusively O'Tree's Technical Prowess>



(Broken wooden eyewear without elasticity)



(Flexible cork temple)

### 2.Fit

- Typical eyewear usually consists of hard materials (metal, plastic)
- Contact with the hard material for a long time to the skin, leaves a mark on the skin caused by skin rash and pressure
- Contact with the hard material for a long time to the skin, leaves a mark on the skin caused by skin rash and pressure.
- There are many products made of cork, but there is no product that directly affects the face skin
- The eyewear that has been directly utilized and created by the cork's many advantages is only O'Tree
- Eyewear will not fit exactly for all consumers because it is ready-made
- There by adjusting the size of the glasses through various methods and provide them to consumers
- In general materials (metal, plastic), fitting methods (fitting by hands after using a heater) are widely used
- The wooden glasses, which are said to be eco-friendly materials, have the advantages of being eco-friendly, but they are not elastic enough to be adjustable and easily broken
- Cork eyewear is an eco-friendly product and can be fitted in the same way as ordinary glasses, and no other fitting tools are required.

## O!TREE Cork Sunglass



**Korean handmade premium eyewear**  
**Conveying personalization and confidence**

Premium eyewear with compilation data from 10,000 people and designs of cork master craftsmen



## O!TREE Cork Eyewear

### **100% handmade unrivaled design**

Based on the personal touch of a leather craftsman from Japan and the technical skills of O'Tree, the unique vintage quality of cork that no brand can dare to imitate. My own fashion statement sunglasses; stylishier with more usage



No brands can't  
dare to imitate~  
Cork's unique  
vintage



## O!TREE Cork Eyewear

My own fashion  
statement eyewear;  
stylishier with more  
usage



Personalization and UV  
protection must have item  
required for travel in all four  
seasons NATURE

SUNGLASS CASE



## O!TREE Cork Eyewear

# O!TREE

O!TREE is light and comfortable

Unlike other glasses,  
they do not get  
pushed down nor  
sweaty

Unrivalled technology is  
applied to our glasses, and it  
is light, comfortable and safe  
to wear.

## O!TREE Cork Eyewear

# O!TREE

Reason for syndrome even among choosy celebs

간간한 셀럽들의 이유 있는 신드롬 ~

성시경, 윤종신, 홍석천, BTS, 랩몬스터,  
BTS\_지민, 에릭남, 유영석, 자석진, 미르, 가운세,  
조진웅, 슈, 정형돈, 이영자, 조정차, 하하, 김현철,  
김범수, 하리수 등 많은 연예인이 오토리의 제품을  
착용하고 있습니다.

O!TREE  
FROM  
NATURE





## O!TREE Cork Eyewear

O! TREE attracting more attention from overseas



Attended New York, Beijing Exhibition and many other global exhibitions,

Signed license with Hollywood actress Amy Smart

We have exported to USA, China and Thailand, and we are getting recognition for  
quality in overseas markets

## O!TREE Cork Eyewear

O!TREE is harmless to the human body and has excellent moisture resistance.



The world's first use of eco-friendly cork materials



KC-certified natural-friendly glasses such as far-infrared ray emission, deodorization and antibacterial



## O!TREE Cork Eyewear



It can be used  
comfortably  
before and after  
a sweaty workout  
even at a  
summer beach

premium technology and differentiated  
design will surpass international luxury  
brand sunglasses,  
and we will make your face a masterpiece.  
Displaying your own unique color ~



O!TREE  
FROM  
NATURE

UV Block 99.9%  
UV 400렌즈  
UV 400 Lens

## O!TREE Cork Eyewear

# O!TREE SUNGLASS

### BARI NO.1

BARI is an oversized round metal frame of various colors  
The cool-colored Mirror lens is a classic and unique design. It is an excellent point fashion item  
during summer vacation for both men and women.

Front color : Black

Lens color : Silver Mirror

소재 : Metal / Cork





## O!TREE Kids Eyewear

Cork craftsman's design and research and development for 5 years, Domestic Premium Kids Sunglasses that reflect the needs of fussy moms



The advertisement features a central graphic with the O!TREE logo and product details, surrounded by four photos of children wearing sunglasses. The background is a teal-to-blue gradient with the O!TREE logo repeated vertically on the sides.

**O!TREE**  
FROM NATURE

100% Handmade in Korea  
국내 100% 핸드메이드

**OITREE KIDS SUNGLASS**  
100% REAL CORK TEMPLES  
100% REAL CORK TEMPLES

## O!TREE Kids Eyewear

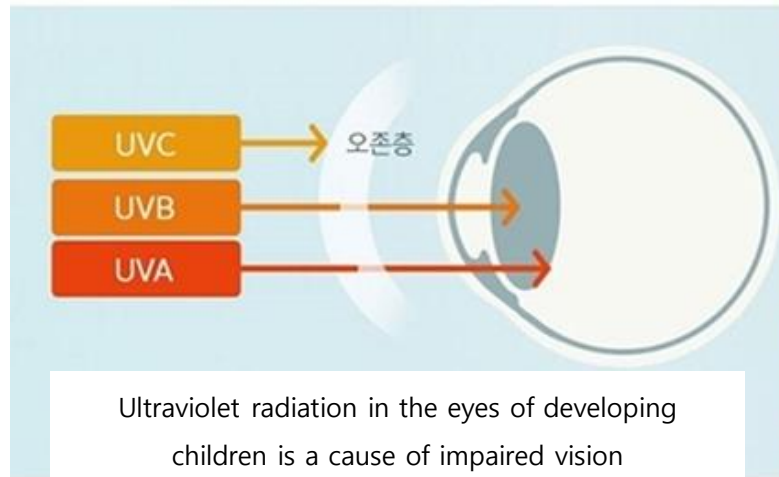
### Why O!TREE KIDS SUNGLASS ?

Essential items for our children's eyes health for all seasons

99.9% UV protection is basic!UV400!

Using sunglasses temples to consider functionality, child safety, and health.

Featured premium sunglasses for fashionable kids



O!TREE Sterilization Test Report

01. ANTIMICROBIAL ACTIVITY AND EFFICACY ( JIS Z 2801 : 2010, FILM-CONTACT METHOD ) : CFU/㎠, VALUE OF ANTIMICROBIAL ACTIVITY:log

		BLANK	#1
BACTERIA-1	THE NUMBER OF BACTERIA AFTER INOCULATION	1.5 x 10 <sup>4</sup>	-
	THE NUMBER OF BACTERIA AFTER 24 h	3.0 x 10 <sup>4</sup>	< 0.63
	ANTIBACTERIAL ACTIVITY (log)	-	4.6
BACTERIA-2	THE NUMBER OF BACTERIA AFTER INOCULATION	1.6 x 10 <sup>4</sup>	-
	THE NUMBER OF BACTERIA AFTER 24 h	4.2 x 10 <sup>5</sup>	< 0.63
	ANTIBACTERIAL ACTIVITY (log)	-	5.8
BACTERIA-3	THE NUMBER OF BACTERIA AFTER INOCULATION	1.4 x 10 <sup>4</sup>	-
	THE NUMBER OF BACTERIA AFTER 24 h	9.5 x 10 <sup>5</sup>	< 0.63
	ANTIBACTERIAL ACTIVITY (log)	-	6.1
BACTERIA-4	THE NUMBER OF BACTERIA AFTER INOCULATION	1.4 x 10 <sup>4</sup>	-
	THE NUMBER OF BACTERIA AFTER 24 h	2.3 x 10 <sup>5</sup>	< 0.63
	ANTIBACTERIAL ACTIVITY (log)	-	5.5
BACTERIA-5	THE NUMBER OF BACTERIA AFTER INOCULATION	1.4 x 10 <sup>4</sup>	-
	THE NUMBER OF BACTERIA AFTER 24 h	3.3 x 10 <sup>5</sup>	< 0.63
	ANTIBACTERIAL ACTIVITY (log)	-	5.7

NOTE) STANDARD FILM : STOMACHER® 400 POLY-BAG  
TEST CONDITION : THE SOLUTION ARE FIXED AT (35 ± 1) °C, 90 % R.H. FOR 24 h, AND DETERMINE BACTERIA CELL GROWTH INHIBITION RATE BY POUR AGAR PLATE METHOD.  
ANTIMICROBIAL EFFICACY : THE VALUE OF ANTIMICROBIAL ACTIVITY SHALL NOT BE LESS THAN 2.0  
TEST BACTERIA : BACTERIA 1 - *Staphylococcus aureus* ATCC 6538P.  
BACTERIA 2 - *Klebsiella pneumoniae* ATCC 4352.  
BACTERIA 3 - *Escherichia coli* ATCC 8739.  
BACTERIA 4 - *Pseudomonas aeruginosa* ATCC 27853.  
BACTERIA 5 - *Salmonella typhimurium* KCTC 1925.  
SEE ATTACHED PHOTOS.

\*\* End of The Report \*\*



-ANTIBACTERIAL ACTIVITY OF TEXTILES PHOTO : BACTERIA-1 : BLANK -



-ANTIBACTERIAL ACTIVITY OF TEXTILES PHOTO : BACTERIA-2 : BLANK -



-ANTIBACTERIAL ACTIVITY OF TEXTILES PHOTO : BACTERIA-1 : #1 -



-ANTIBACTERIAL ACTIVITY OF TEXTILES PHOTO : BACTERIA-2 : #1 -



-ANTIBACTERIAL ACTIVITY OF TEXTILES PHOTO : BACTERIA-2 : BLANK -



-ANTIBACTERIAL ACTIVITY OF TEXTILES PHOTO : BACTERIA-1 : BLANK -



-ANTIBACTERIAL ACTIVITY OF TEXTILES PHOTO : BACTERIA-2 : #1 -



-ANTIBACTERIAL ACTIVITY OF TEXTILES PHOTO : BACTERIA-1 : #1 -



## O!TREE Kids Eyewear

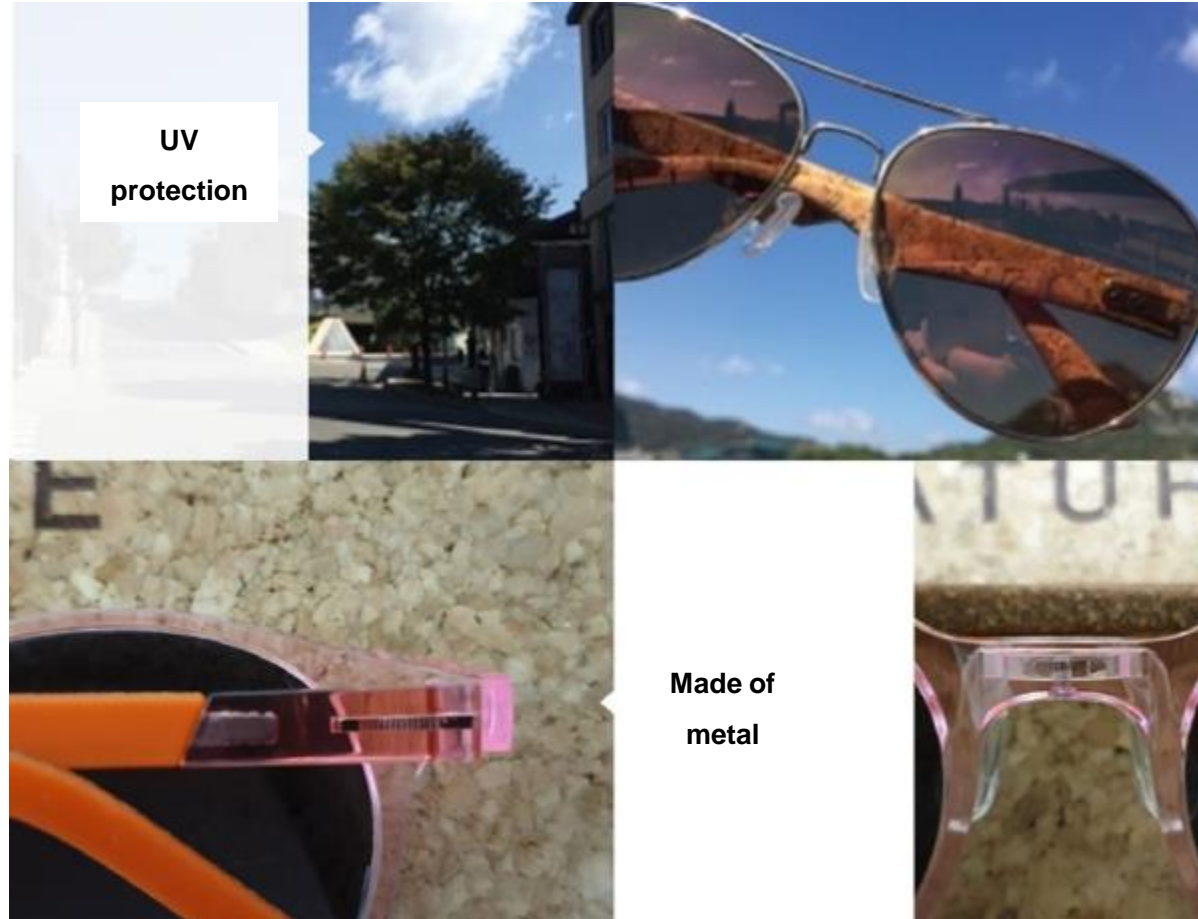
국내 100% 핸드메이드 디자인

100% Handmade in Korea Based on the personal touch of a leather craftsman from Japan and the technical skills of O'Tree unrivaled design  
Cork and silicone MIX High-end and diverse COLOR fashion sunglasses Reliable 100% handmade Korean product  
(differentiation from dull unified design!)





## O!TREE Kids Eyewear



## O!TREE Kids Eyewear

**Made of  
Cork**



- Skin irritation, allergy prevention and antibacterial effect
- Use 100% medical silicon nose support
- Anti-slip function for active children
- Bridge for safety prevention, For durability enhancement metal material is used on Hinge part
- Use of elastic cork to freely correct temples
- UV 400 Products Blocks 99.9% or higher UVA, UVB

**UV  
protection**



## O!TREE Kids Eyewear

# O!TREE SUNGLASS

**SOL NO.1**

Using round colored Temple color to make a child's cuteness stand out. Lightweight, harmless cork and 100% silicone material Temple features a mirror lens with easy on your eyes and two-tone 99.9% UV-block lens

This model provides a comfortable fit and a refined feel.

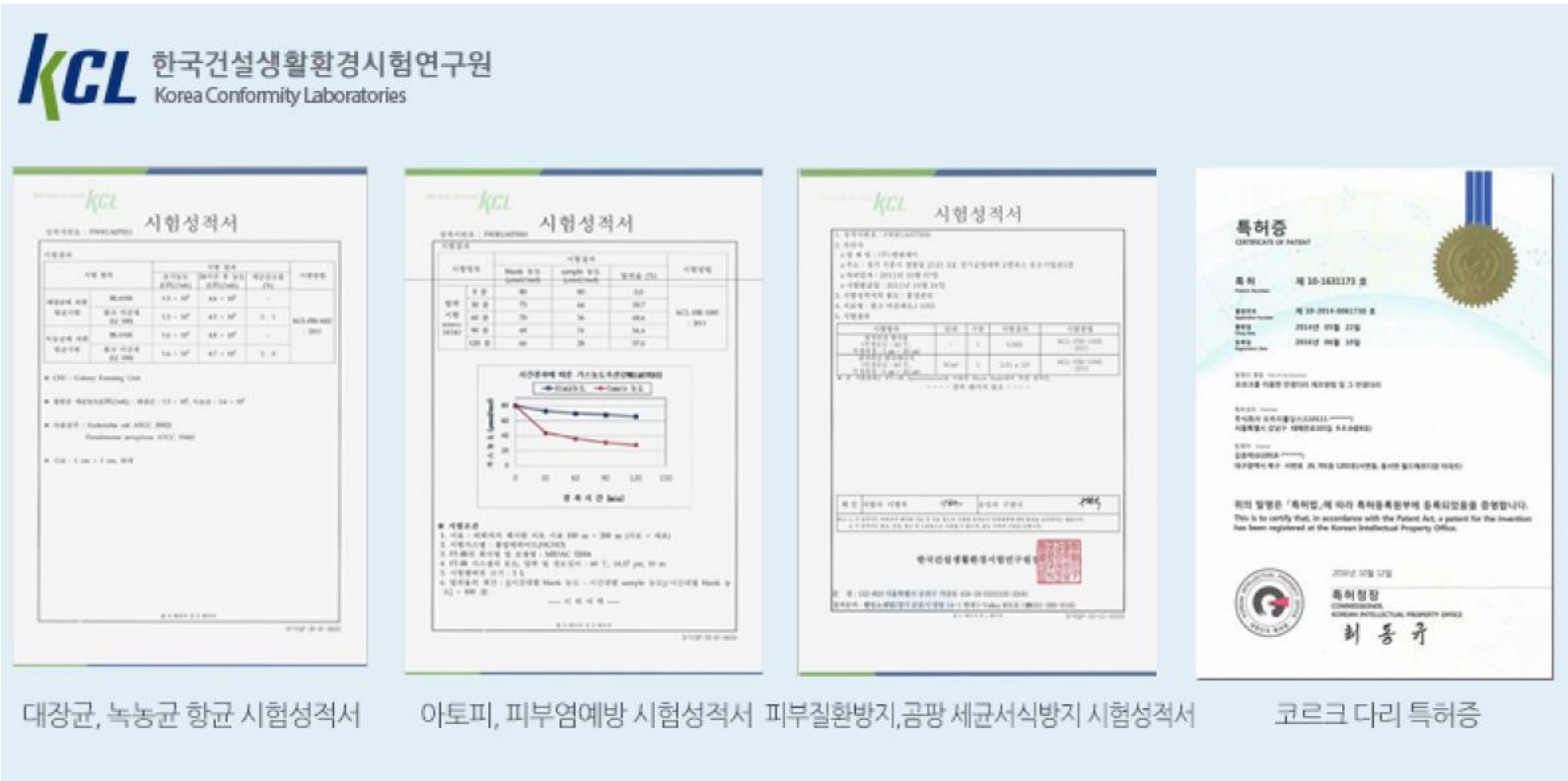
Front color: Black Lens color: Silver Mirror

*Illustration: KIMOTO*



## O!TREE Cork Eyewear

Obtained patent and KC certification



Test report of E. coli and rusty antibacterial

Test report of Atopy, dermatitis prevention

Test report on anti-skin disease fungus form prevention

Patent certificate



## O!TREE Cork Eyewear

### CORK SUNGLASS CASE



본사 정품 보증 카드 6개월 무상 본사 AS

Original Warranty Card authenticates cork of the O'tree

## O!TREE Cork Eyewear



### The Development Motives of Cork Eyeglasses and the effects and Advantages of Cork to Glasses

- Born in a multi-family home, all siblings wore glasses,.
- Since childhood, have been wearing glasses and dancing, and have always felt the inconvenience of glasses, such as swelling and sweating caused by the weight of glasses due to the large movement, resulting in skin allergy.
- In the 2000s, the wine boom in Korea introduced the taste of wine, and for the first time, began to know about the substance 'Cork.'
- It was interesting that the cork was used as a wine lid, it did not get wet as a whole, but it retained the taste of the wine and was soft, stretchy and flexible enough to play the role of a bottle cap tightly
- As becoming interested in cork, found that it was used as a living material in Europe by taking advantage of cork's strengths.
- thought that if we could use the cork's strengths on the temples of glasses, we would be able to relieve the discomfort of glasses, and we started to wonder, 'Why don't we apply the cork material to our glasses?'

## O!TREE Cork Eyewear



### The Development Motives of Cork Eyeglasses and the effects and Advantages of Cork to Glasses

- Since then, we have been going around cork product manufacturing plants in Korea, and bought cork fabric and made eyeglasses for ourselves, making an idea a reality.
- The first attempt was made in the form of glasses, but it could not be worn because it was too soft
- Taking motive from the human body, the idea was that there were strong bones inside and soft skin, so we put bone-like skeletons inside the cork and covered the cork.
- The condition of glasses was satisfied, but the discoloration of the cork due to the use for a long time became a problem
- In order to overcome these drawbacks, the cork surface was finally finished with an environmentally friendly coating agent
- There was a development period of 5 years prior to its release in 2015, and several difficulties were overcome.

## O!TREE Cork Eyewear



- Cork is a bark of the Oak Tree that grows in the Mediterranean Sea and has many functions to protect the trees in response to climate change.
- First, it protects the tree with fungus and germs by releasing far infrared rays to prevent insect pests. This can eliminate factors that cause skin allergies due to sweat or dust when wearing glasses
- Second, the suberin and seroid components of cork prevent liquid or gas from passing through and the cell shape of the honeycomb structure quickly releases moisture so that trees do not rot in the moisture.
- When the cork glasses come into contact with the water, the water is taken out instantaneously, so that a comfortable fit can be provided.

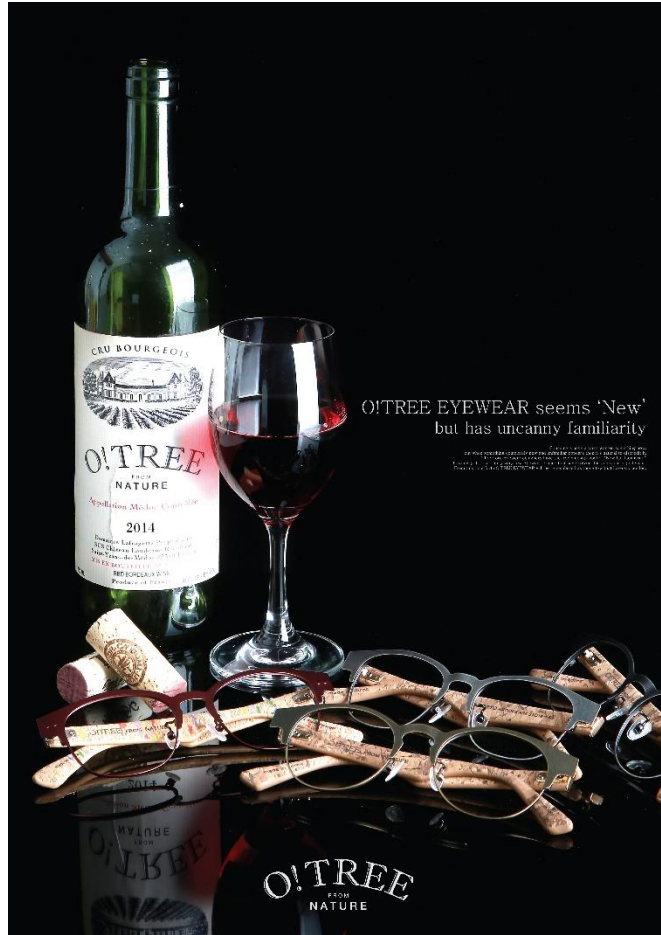


## O!TREE Cork Eyewear



- Third, the cork is an excellent insulating material from such as heat, sound and vibration, sensitive to movement or temperature changes, and keeps it in the optimal environment.
- When using cork as an eyeglass temple, it keeps the temperature constantly soft and constant regardless of the temperature change in summer and winter, and it does not get cold or hot.
- Fourth, the cork has an air layer between the cells of the honeycomb structure and is light and elastic and compressible as the only solid that does not increase in volume when cork is compressed.
- An advantage that can be gained by only cork glasses are, it gives a comfortable fit to the wearer's flexible condition such as the swelling of the face.

## O!TREE Cork Eyewear



- Fifth, the cork is an eco-friendly, natural material that can be continuously regenerated by peeling off the bark without cutting down trees.
- This can be used as a substitute for materials of chemicals that cause pollution in the natural environment that we are currently in, and the value of cork material is a conscious act to reduce the damage that comes back to humans and to symbiosis with nature.
- The name of the brand is O! TREE, short for OAK TREE, and developed using material cork from Portugal, so the name of the eyewear models were chosen as the city names of Portugal in their honor



**Thank You!**